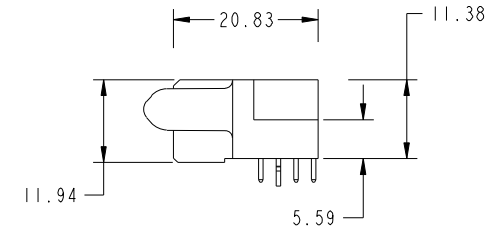
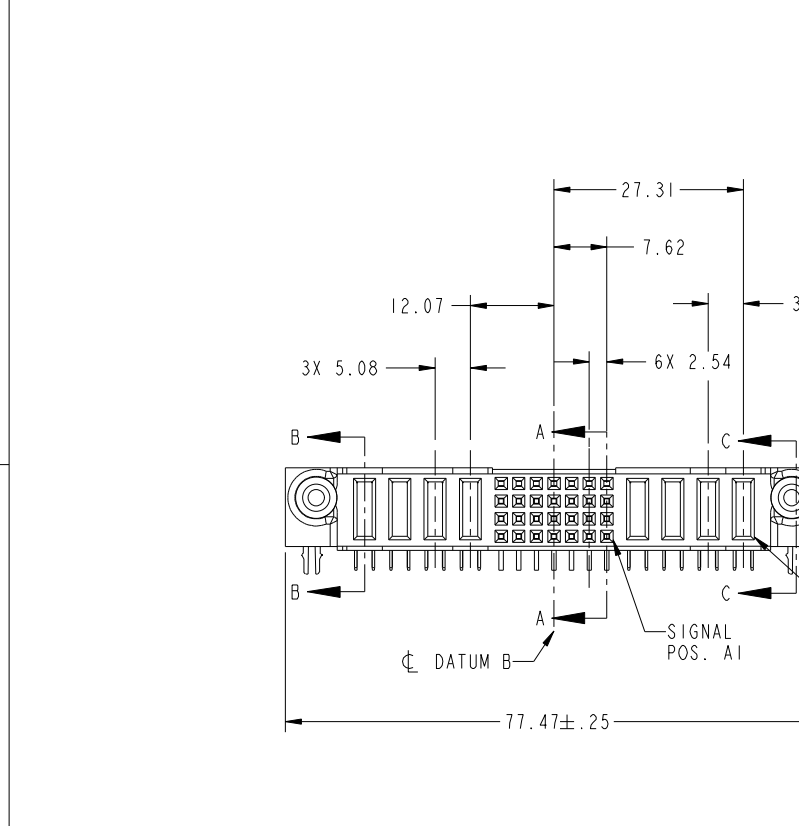
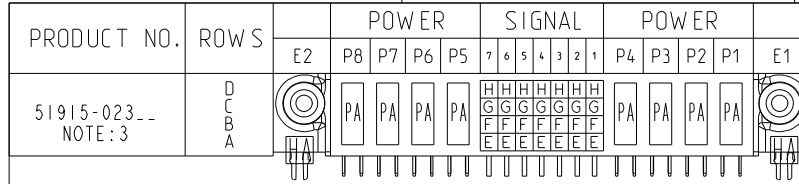


Tous droits strictement reserves. Reproduction ou communication a des tiers interdite sous quelque forme que ce soit sans autorisation écrite du propriétaire. Propriete de c FCI. Droits de reproduction FCI.



All rights strictly reserved. Reproduction or issue to third parties in any form whatever is not permitted without written authority from the proprietor. Property of FCI. Copyright FCI.



CODE	DIM "M" MATING LENGTH	CONTACT TYPE
E	[N/A]	SIGNAL
F	[N/A]	SIGNAL
G	[N/A]	SIGNAL
H	[N/A]	SIGNAL
PA	[1.07]	POWER
HA	[N/A]	HOLD-DOWN

mat'l code				SEE NOTE 2		tolerances unless otherwise specified		CUSTOMER	
ltr	ecn no.	dr	date	linear	0.X ± 0.5	projection	FCI		
A	V03-0391	MEM	4/7/03	angles	0.XX ± 0.25		www.fciconnect.com		
B	DG05-0365	CS	09/28/05		0.XXX ± 0.10		title 4P + 28S + 4P R/A SOLDER RECEPTACLE		
C	DG07-0498	JW	09/15/08		0° + 2°	scale	product family	PwrBlade	code
				dr	M. MOSTOLLER 4/7/03	1:1	size	dwg no	213
				enrg	M. MOSTOLLER 4/7/03			51915-023	sheet
				chr	H. BREWBAKER 4/7/03				1 of 4
				appd	M. MOSTOLLER 4/7/03				
sheet index	revision sheet	C 1	C 2	C 3	C 4				

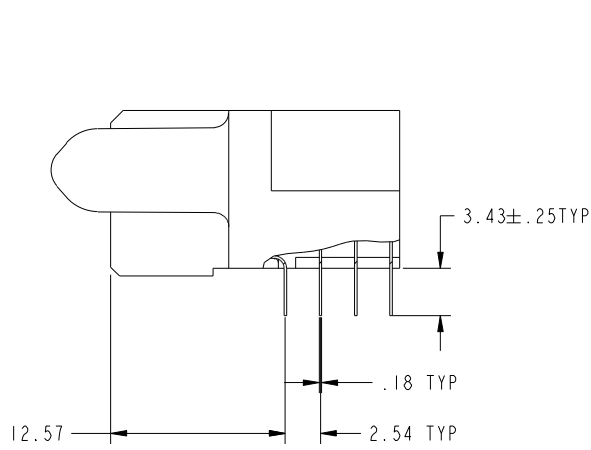
cage code		22526
-----------	--	-------

Tous droits strictement reserves. Reproduction ou communication a des tiers interdite sous quelque forme que ce soit sans autorisation ecrite du proprietaire. Propriete de c FCI. Droits de reproduction FCI.

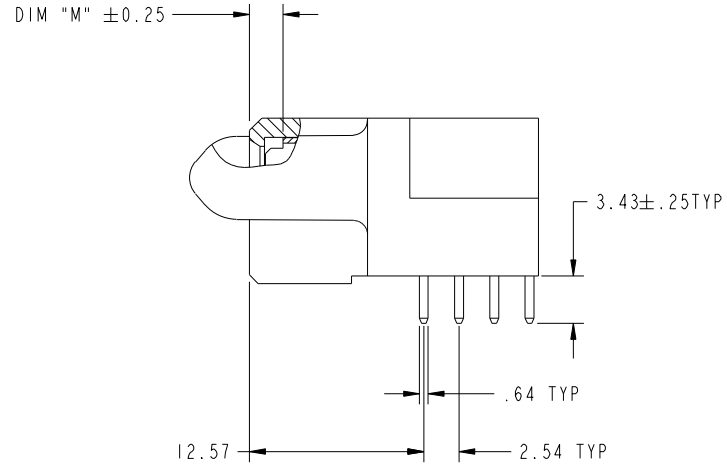


All rights strictly reserved. Reproduction or issue to third parties in any form whatever is not permitted without written authority from the proprietor. Property of FCI. Copyright FCI.

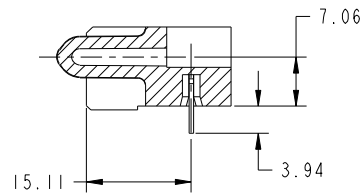
PRODUCT NUMBER
51915-023--
NOTE: 3



BROKEN-OUT SECTION A-A
SCALE 2:1



BROKEN-OUT SECTION B-B
SCALE 2:1



SECTION C-C

mat'l code		SEE NOTE 2		tolerances unless otherwise specified		CUSTOMER		www.fciconnect.com	
ltr	ecn no.	dr	date	linear	0.X ± 0.5	COPY		title	
C					0.XX ± 0.25	projection		4P + 28S + 4P R/A SOLDER RECEPTACLE	
				angles	0.XXX ± 0.10			product family PwrBlade code	
				dr	0° + 2°			size	
				enrg	M. MOSTOLLER 4/7/03	scale		dwg no	
				chr	M. MOSTOLLER 4/7/03	1:1		51915-023	
				appd	H. BREWBAKER 4/7/03			sheet	
					M. MOSTOLLER 4/7/03			2	
sheet index	revision sheet							cage code	
								22526	

Pro/E

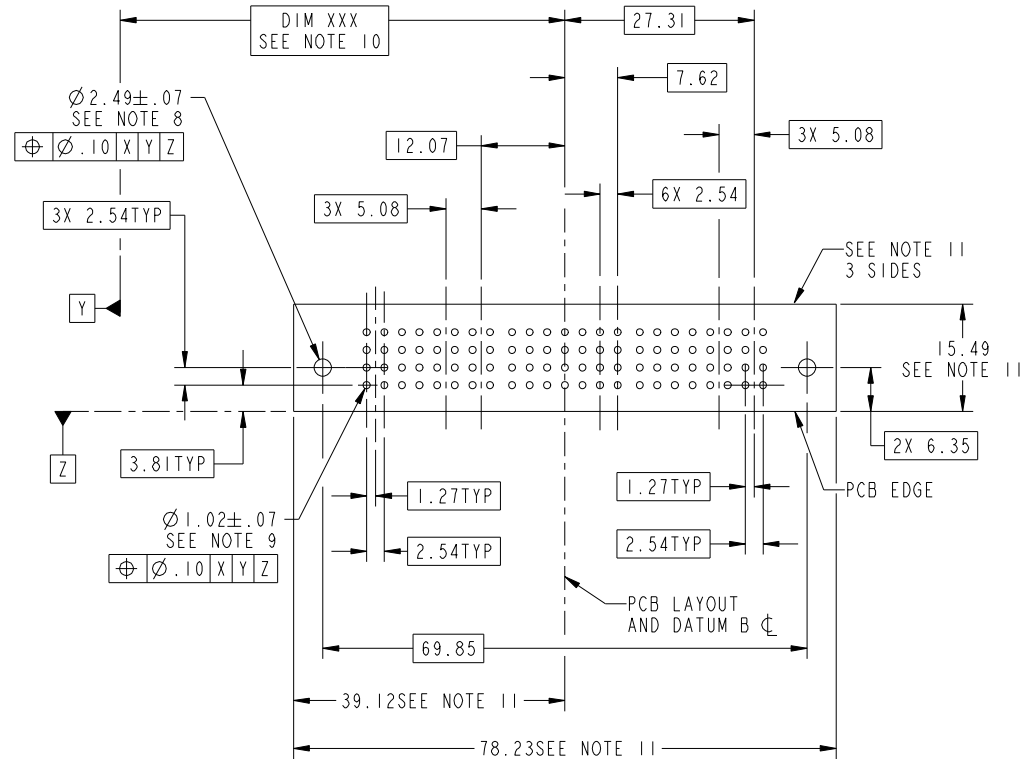
cage code 22526

Tous droits strictement reserves. Reproduction ou communication a des tiers interdite sous quelque forme que ce soit sans autorisation écrite du propriétaire. Propriete de c FCI. Droits de reproduction FCI.



All rights strictly reserved. Reproduction or issue to third parties in any form whatever is not permitted without written authority from the proprietor. Property of FCI. Copyright FCI.

PRODUCT NUMBER
51915-023--
NOTE: 3



mat'l code				SEE NOTE 2		tolerances unless otherwise specified		CUSTOMER		www.fciconnect.com	
ltr	ecn no.	dr	date	linear	0.X ± 0.5		COPY			title	
C					0.XX ± 0.25		MIM			4P + 28S + 4P R/A SOLDER RECEPTACLE	
					0.XXX ± 0.10					product family PwrBlade code 213	
				angles	0° + 2°		scale		size		
				dr	M. MOSTOLLER	4/7/03	1:1		dwg no		
				enrg	M. MOSTOLLER	4/7/03			51915-023		
				chr	H. BREWBAKER	4/7/03			sheet 3		
				appd	M. MOSTOLLER	4/7/03			cage code		
sheet index		revision sheet								22526	

Pro/E

cage code 22526

Tous droits strictement reserves. Reproduction ou communication a des tiers interdite sous quelque forme que ce soit sans autorisation écrite du propriétaire. Propriete de c FCI. Droits de reproduction FCI.



All rights strictly reserved. Reproduction or issue to third parties in any form whatever is not permitted without written authority from the proprietor. Property of FCI. Copyright FCI.

PRODUCT NUMBER
51915-023_-
NOTE: 3

NOTES:

1. DIMENSIONS AND TOLERANCES ARE IN ACCORDANCE WITH ASME Y14.5M, 1994 UNLESS OTHERWISE SPECIFIED.

CONNECTOR NOTES:

2. HOUSING MATERIAL: UL 94 V-0 GLASS FILLED
HIGH-TEMP THERMOPLASTIC
POWER CONTACT MATERIAL: COPPER ALLOY
SIGNAL PIN MATERIAL: COPPER ALLOY

3. PLATING:
SEE ITEM 5 & 6 IN PRINT 10064183 FOR PLATING SPEC OF 51915-023; 51915-023LF PRESPECTIVELY

4. MANUFACTURER'S NAME, P/N, AND DATE CODE TO APPEAR ON THIS SURFACE.

5. PRODUCT SPECIFICATION GS-12-149.
APPLICATION SPECIFICATION BUS-20-067.

6. PACKAGED IN TRAYS.

PCB NOTES:

7. ALL HOLE DIAMETERS ARE FINISHED HOLE SIZE.

8. MOUNTING HOLES, WHERE APPLICABLE, ARE UNPLATED.

9. $\varnothing 1.151 \pm 0.025$ DRILLED HOLES PLATED WITH
0.008 MIN SnPb OR Sn OVER 0.03
TO 0.08 Cu PLATING TO ACHIEVE
 $\varnothing 1.02 \pm .07$ HOLE.

10. "DIM XXX" TO BE DETERMINED BY THE CUSTOMER.

11. CONNECTOR KEEP-OUT ZONE.

12. A \triangle SYMBOL WILL BE NEXT TO ANY DIMENSION, VIEW, OR NOTE WHICH HAS BEEN MODIFIED WITH THE CURRENT DRAWING REVISION.

mat'l code		SEE NOTE 2		tolerances unless otherwise specified		CUSTOMER		www.fciconnect.com	
ltr	ecn no.	dr	date	linear	0.X ± 0.5	COPY			title 4P + 28S + 4P R/A SOLDER RECEPTACLE
C					0.XX ± 0.25	projection			
				angles	0.XXX ± 0.10				
				dr	M. MOSTOLLER 4/7/03	product family		PwrBlade	code
				enrg	M. MOSTOLLER 4/7/03	size		dwg no	213
				chr	H. BREWBAKER 4/7/03	scale		A	sheet
				appd	M. MOSTOLLER 4/7/03	1:1			
sheet index	revision sheet								

cage code 22526

Pro/E